



ZEAL INTERNATIONAL (An ISO 9001 Certified Company)

Head Office: 1, Netaji Subhash Marg Daryaganj, New Delhi - 110002 INDIA

Phone: +91-11-23276114, 23244474, 23250281, 23278846 Fax: +91-11-43580558

Branch Office: 4/20 Kirti Nagar Industrial Area New Delhi - 110015 Phone: +91 11 45380800

Warehouse: 4/26 Kirti Nagar Industrial Area New Delhi – 110015

info@zealinternational.com

sales@zealinternational.com

support@zealinternational.com

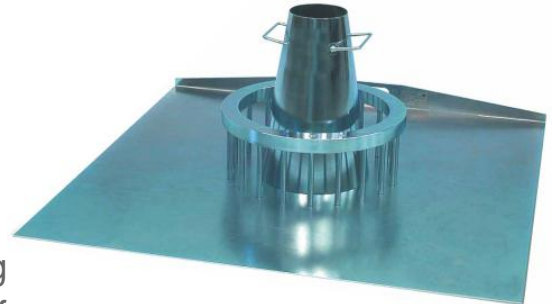
quotation@zealinternational.com

Visit us at: www.zealinternational.com

J-Ring, Narrow Gap ZI 2009

Standards: EN 12350-12

Specification:



The J-Ring test is used for determining the passing ability, the flow spread and the flow time of self compacting concrete as the concrete flows through the J-Ring apparatus. The J-Ring narrow gap with $\varnothing 18$ mm x 16 smooth bars is manufactured from stainless steel.

The Slump Cone is made from sheet steel protected against corrosion, with diameters; top 100 mm, base 200 mm and with a height of 300 mm. The Base plate is 900x900x3 mm square, made of stainless steel with engraved circles of 200 mm and 500 mm diameter conforming to EN 12350- 8.

The Steel weighted collar is used to stabilize the slump cone on J-Ring or slump flow tests.

Minimum apparatus for the J-Ring test are J-Ring with narrow gap and slump cone.

ZI 2009 : J-Ring, narrow gap

ZI 2002 : Slump cone for J-Ring

ZI 2009-A : Base plate for J-Ring and slump-flow tests

ZI 2009-B : Steel weighted collar, 9 kg

ZI 2009-C : EN 12350-8 for slump cone on J-Ring or slump flow test